



Adhesive Magnet Lock

with storage disc

Easy 2-Step Installation Guide

Before removing the adhesive protective liner, do a dry run and test each step to make sure the installation will work. The SecureHold™ adhesive is meant to be used once only and cannot be repositioned if done incorrectly.

For Cabinet Doors please see instructions after Step 3.

IMPORTANT:

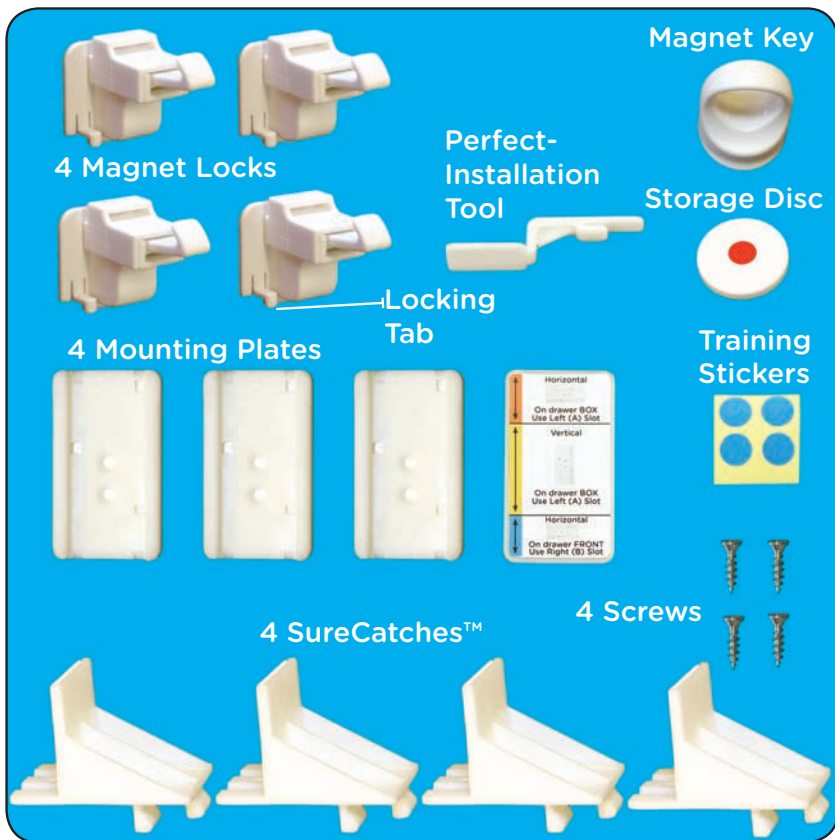
Qdos wants to keep your children safe and for that we need you to do your part by carefully reading and following the instructions below. Please read through the instructions before starting the installation.

For installation videos and FAQs go to: [QdosSafety.com](https://www.QdosSafety.com)

TIP: Install the Magnet Locks in the evening so the adhesive can set overnight.

TIP: Try to position the Magnet Locks in a similar location in all drawers for ease of operation.

Parts List:



Drawers

For installation in Drawers, please see page 3

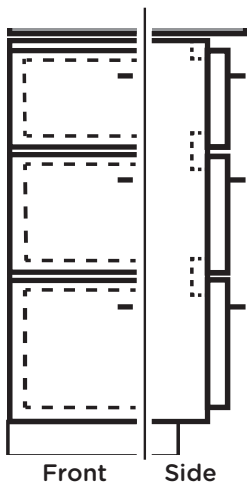
Doors

For installation on Doors, please see page 8

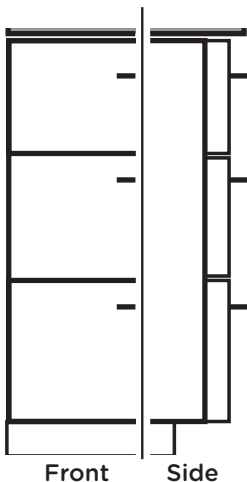
Know your cabinet type

There are three basic types of kitchen cabinets and the following drawings will help you determine which type you have.

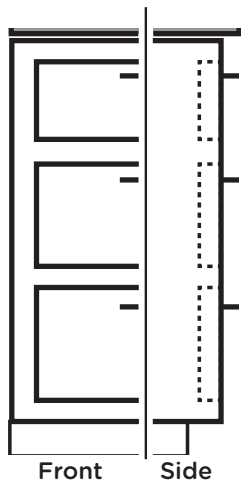
Standard Framed Cabinet



Frameless “Euro” Cabinet*



Flush Framed Cabinet**



The Standard Framed Cabinet is by far the most common type and if this is what you have, follow the 2-Step Installation below.

*Unfortunately, we currently do not have a solution for the Framesless “Euro” Cabinets or the Flush Framed Cabinets, but we are working on a solution for these.

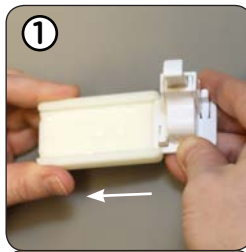
STEP 1 - Position the SureCatch™

The SureCatch™ can be positioned on either the right or left side of the drawer depending on preference.

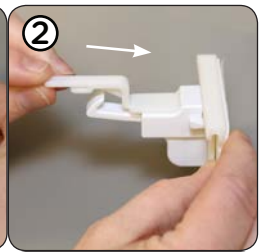
TIP: Try to position the latches in a similar location in all drawers for ease of operation.

As screw heads may interfere with the adhesive installation, it’s important to find an area on the inside of the drawer without screw heads for the Mounting Plate to properly stick to. In order to help determine this it helps to partly assemble the SureCatch™ Latch as follows to find a good location.

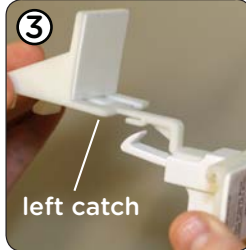
1. While holding the Mounting Plate horizontally slide the Magnet Lock into the center position.



2. Insert the Perfect-Installation Tool into the Magnet Lock with the wide end sliding into the slot on top of the Magnet Lock.



3. Insert the Perfect-Installation Tool into the opening above the LEFT catch on the SureCatch™. This will hold the Mounting Plate in the desired position.



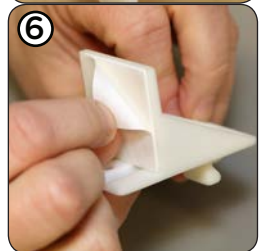
4. Hold this assembly up to the front of the cabinet frame.

Push the drawer in so you can judge to make sure the mounting plate doesn't hit on a screw head. Reposition, if needed.

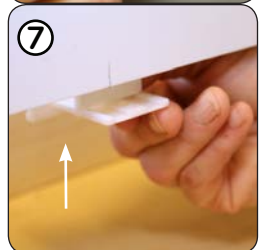


5. Carefully mark the location for the SureCatch™ on the frame with a pencil.

6. Remove the Perfect-Installation Tool from the SureCatch™ and peel the protective liner off so it can be glued onto the back of the frame.

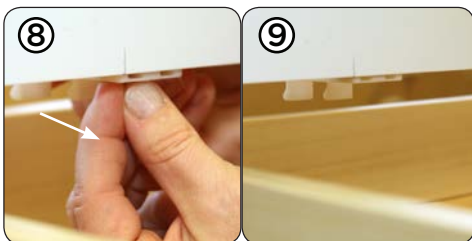


7. From behind the cabinet frame, lift the SureCatch™ up until it makes contact with the drawer frame, lining it up to your mark. Be careful not to let the adhesive stick to the back of the frame until the catch is lifted up in contact with the bottom of the frame.



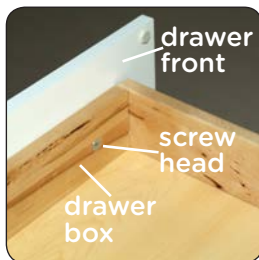
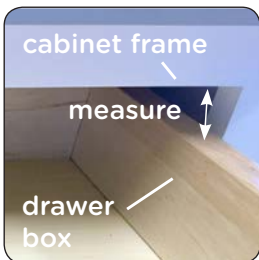
8. Finally pull the SureCatch towards you until the adhesive sticks to the back of the frame and press firmly on the adhesive for at least 30 seconds.

9. The SureCatch is now installed and you can erase the marking.



STEP 2 - Position the Mounting Plate

While most other latches on the market create different opening gaps depending on the installation situation, which in many cases will allow a child to reach into the drawer, the Qdos SureCatch™ creates one safe gap by allowing for different installations depending on the design and measurements of your cabinet. Based on the design of the cabinet, the Mounting Plate can be positioned in one of three positions. The distance between the cabinet frame and the top of the drawer box will decide the position.



Using the template on the back of one of the Mounting Plates, it will tell you the distance and what steps to follow below.



0" - 0.75"
(0-19 mm)



0.75" - 2"
(19-50 mm)



Above 2"
(50 mm)

2A - Measurement of 0"-3/4"

1 With the Magnet Lock still in the middle position of the Mounting Plate from STEP 1 and with the Perfect-Installation Tool still attached, insert the Perfect Installation Tool into the LEFT (A) slot of the SureCatch™ until it grips. This will hold the Mounting Plate in the desired position.

2 Slowly push the drawer in to verify that the Mounting Plate hits on the **drawer box**. Then open the drawer again.

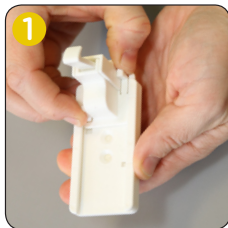
3 Remove the adhesive protective liner on the Mounting Plate. Slowly push the drawer in until the Mounting Plate sticks to the **drawer box**.

4 Now reach in with your fingers and press firmly on the Mounting Plate against the **drawer box** for at least 30 seconds. Open drawer. Remove the Perfect-Installation Tool. You're **DONE!**



2B - Measurement of 3/4"-2"

1 Remove the Magnet Lock from the Mounting Plate and while holding Mounting Plate **VERTICALLY** with the arrow pointing up, re-insert the Magnet Lock into the Mounting Plate from the top and with the Perfect-Installation Tool still attached.



2 Slide the Magnet Lock until it locks in place at the top of the Mounting Plate.



3 Insert the Perfect-Installation Tool into the LEFT (A) slot of the SureCatch™ until it grips. This will hold the Mounting Plate in the desired position.



4 Slowly push the drawer in to verify that the lower part of the Mounting Plate hits on the drawer box. Then open drawer again.



5 Remove the adhesive protective liner on the Mounting Plate. Slowly push the drawer in until the Mounting Plate sticks to the drawer box. Now reach in with your fingers and press firmly on the Mounting Plate against the drawer box for at least 30 seconds.



Open drawer. Remove the Perfect-Installation Tool.

6 Due to the Mounting Plate sticking up over the drawer box, it is necessary to add a screw to securely hold it in place. Use one of the supplied screws to attach through the lower screw hole. You're DONE!



2C - Measurement of Over 2"

- 1 With the Magnet Lock still in the middle position of the Mounting Plate from STEP 1 and with the Perfect-Installation Tool still attached, insert the Perfect-Installation Tool into the RIGHT (B) slot of the SureCatch™ until it grips. This will hold the Mounting Plate in the desired position.
- 2 Slowly push the drawer in to verify that the Mounting Plate hits on the **drawer front**. Then open drawer again.
- 3 Remove the adhesive protective liner on the Mounting Plate. Slowly push the drawer in until the Mounting Plate touches the **drawer front**. Now reach in with your fingers and press firmly on the Mounting Plate against the **drawer front** for at least 30 seconds.
- 4 Open drawer. Remove the Perfect-Installation Tool. You're DONE!



For Cabinet Doors

1. Position the Mounting Plate vertically against the edge of the door frame to measure and mark for the position for the DualCatch™ on the frame.



2. Remove the adhesive protective liner. Lift the SureCatch™ up in contact with the underside of the drawer frame, lining it up to your mark. Be careful not to let the adhesive stick to the back of the frame.



3. Now slide the SureCatch™ towards you until the adhesive sticks to the back of the frame. Press on the adhesive firmly for at least 30 seconds for the adhesive to adhere properly.



4. Hold the Mounting Plate VERTICALLY with the arrow pointing up and slide the Magnet Lock into the top position by lifting the Locking Tabs.



5. Insert the Perfect-Installation Tool into the Magnet Lock with the wide end sliding into the slot on top of the Magnet Lock.



6. Insert Perfect-Installation Tool in the RIGHT slot of the SureCatch™.



7. Remove the adhesive protective liner on the Mounting Plate.



8. Carefully close the door until Mounting Plate sticks to it. Open door and press Mounting Plate firmly against the door for 30 seconds. Do not use a screw as it may penetrate the front of the door. Remove Perfect-Installation Tool.



Operation

To Open - In order to open the Magnet Lock in a drawer or door you must use the Magnet Key and slide it directly on the outside of the drawer or door front to create the magnetic action that will allow you to pull the drawer or door open.



To Close - Simply push close as normal and the Magnet Lock will catch on the SureCatch™ automatically.

Training Stickers

To help you find the location of the magnet lock, we have included training stickers to place where the Magnet Key opens the drawer or door. Remove when you are familiar with finding the location.



Storing the Magnet Key

It is very important to store the Magnet Key out of reach, and even better out of sight, for children. The included Magnetic Storage Disc with adhesive on the back allow you to store the Magnet Key in your chosen location.



IMPORTANT: If at all possible, make it a habit of not allowing your children to see when you open up the drawers or doors, as well as where you store the Magnet Key. The longer you can keep this a secret the longer you will enjoy not having children rummaging through your drawers and cabinets.

Temporary Removal

We are not fans of easy on/off functions in latches as it's too easy to forget and now you have reintroduced a safety risk. However, in some situations when not needed for a long period of time, you can temporarily remove the Magnet Lock by simply pushing on the two Locking Tabs simultaneously and slide it out.



Permanent Removal

To remove Mounting Plate:
Use a rounded knife and carefully pry behind a corner of the Mounting Plate until the tape tears.

To remove the SureCatch™:
Carefully pry Catch off the back of frame with a rounded knife until tape tears.



For remaining tape residue, use a finger to simply rub it away. If any residue still remains, use a cleaner that will not damage the surface you are removing the residue from. There is no way to test all possible surfaces the SecureHold™ Adhesive will be applied to, so please use caution when removing to avoid damaging the surface.

⚠️ WARNING

- **ADULT INSTALLATION REQUIRED**

- Do not use this product to protect toxic and dangerous substances. Such products should always be placed high up and preferably made completely inaccessible to children.

- **CAUTION:** This product is only a deterrent. It's not a substitute for proper adult supervision. To keep product effective as long as possible, avoid letting children see how you operate it. Discontinue use when the child is able to defeat it.



3350 Town Point Drive, Suite 100
Kennesaw, GA 30144 USA

1-800-593-5522 • www.QdosSafety.com

©2016 Regal Lager, Inc. All rights reserved.

Made to Qdos Standards in China.